



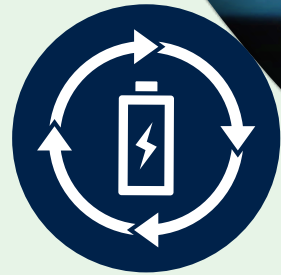
Meet our
partner

EVERLEDGER





REINFORCE



Who we are and what we do in REINFORCE



Digital Tracking

- Everledger excels in digital tracking, providing real-time visibility and monitoring of assets across complex supply chains. This tracking ensures accountability and authenticity, reducing fraud and improving consumer trust.

Blockchain Solutions

- Leveraging blockchain technology, Everledger creates immutable records of product provenance, ownership, and characteristics. This secure and transparent ledger enhances trust and efficiency, streamlining processes for all stakeholders.

Traceability Technologies

- By implementing advanced traceability technologies, Everledger enables end-to-end tracking of products from origin to consumer. This ensures authenticity, sustainability, and ethical sourcing, meeting the growing demand for responsible business practices.

Leadership & Key Content Roles

Leading & Contributing content to Task Deliverable 2.3 to develop comprehensive "user requirements for battery passports "

Leading Task Deliverable 3.4 to establish critical "standardisation guidelines for battery collection and logistics processes."

Expert Review

Conducted an expert review of Task Deliverable 7.1, the foundational report "Characterisation of the Circular Battery Value Chain" providing essential insights and recommendations.

Supporting Contributions

Leveraging our advanced blockchain and traceability expertise to strengthen the contributions across key workstreams including WP1, WP4, WP7 and WP8.

Who we are

Our role in REINFORCE

REINFORCEPROJECT.EU

The Team

Leanne Kemp

CEO, Founder, Key Engagement
Officer for Reinforce



David Carrington

Senior Architect & Blockchain
Engineer



Emily Philip

Sustainability, Product
Communication



REINFORCEPROJECT.EU



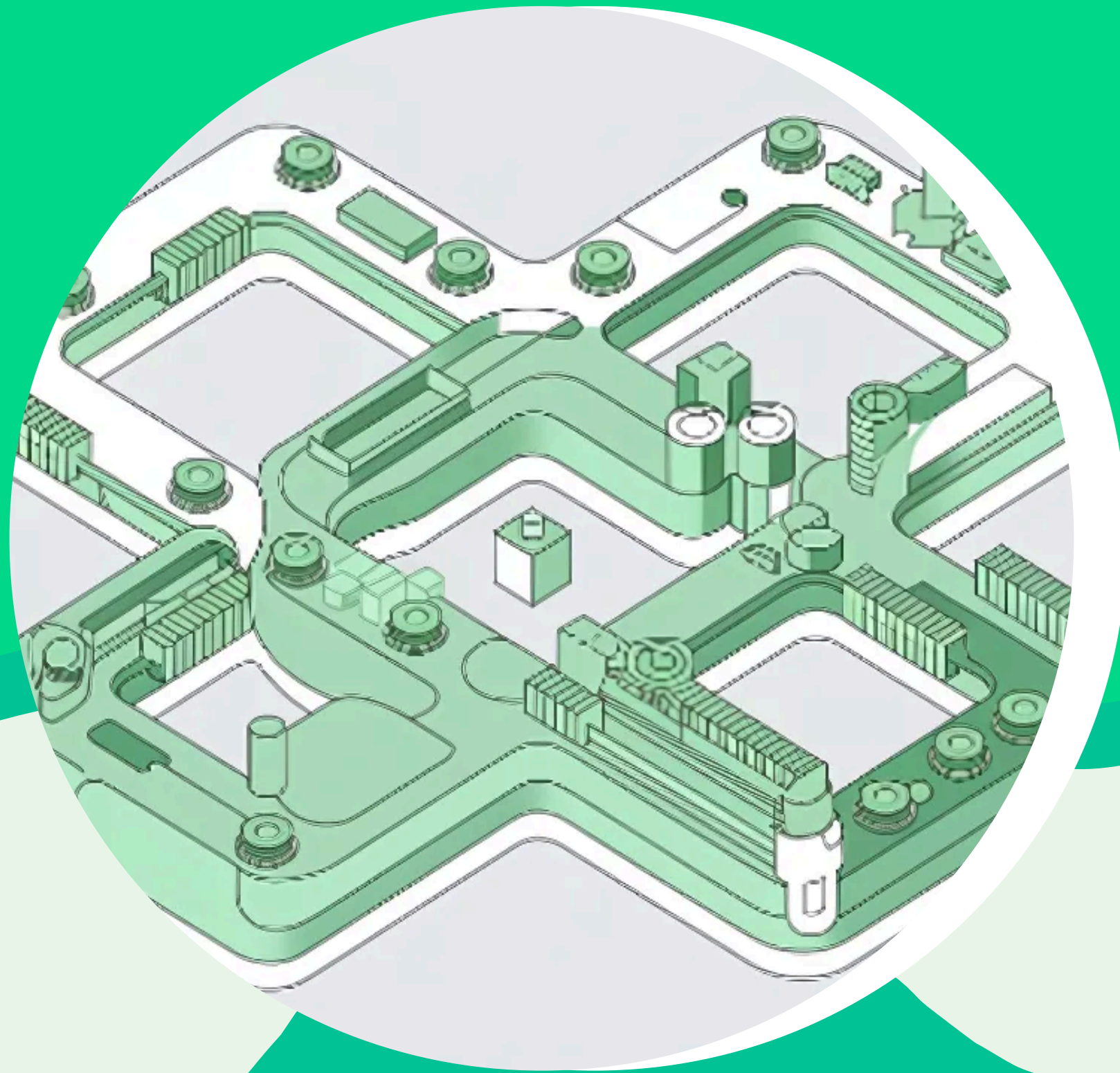
Follow us



@Reinforce_Proj



reinforce-project



EVERLEDGER www.everledger.io



REINFORCEPROJECT.EU

